

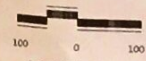
# COTTONWOODS

## AT DALTON RANCH

FINAL PLAT - PROJECT NO. 2001-171

LOCATED IN

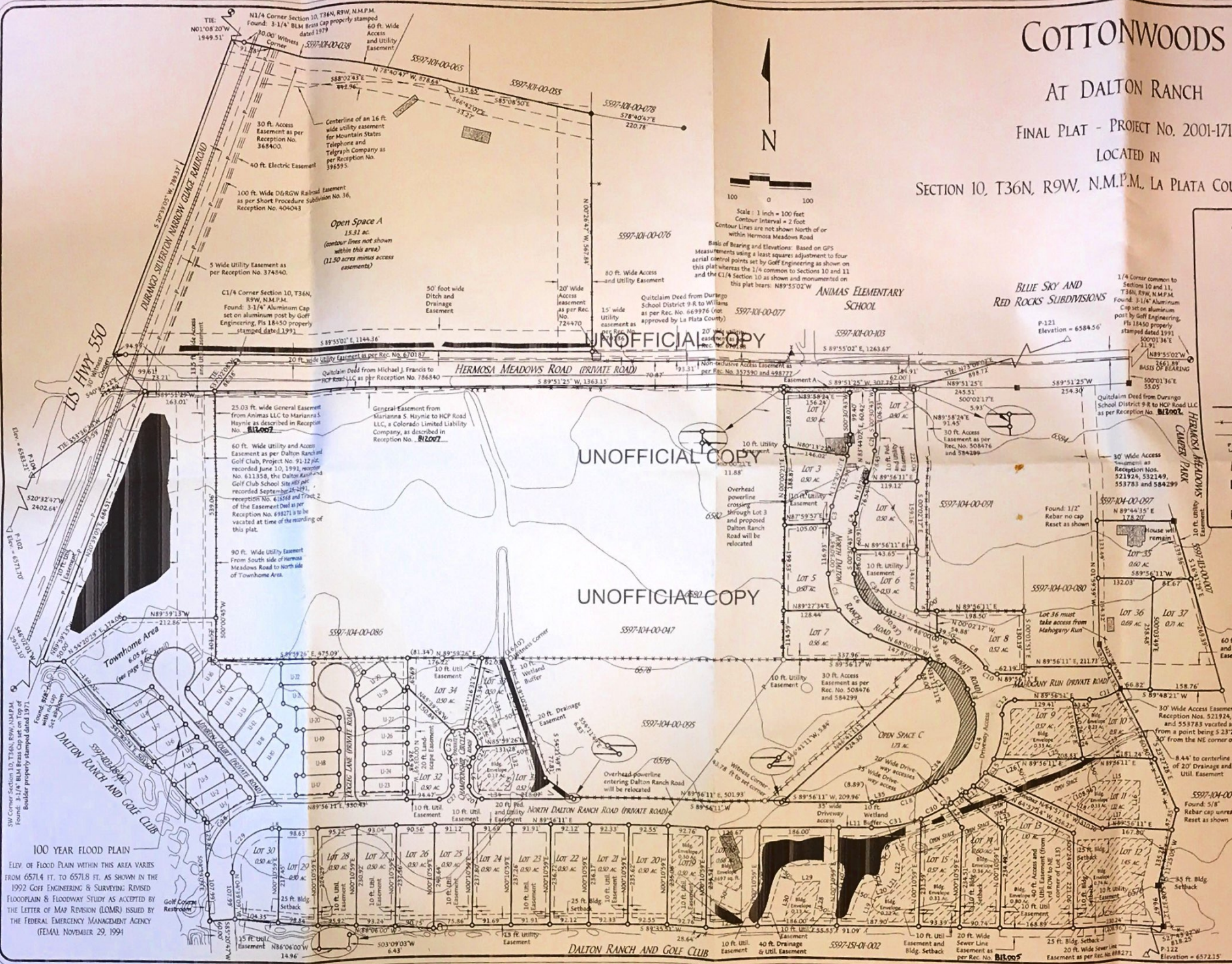
SECTION 10, T36N, R9W, N.M.P.M., LA PLATA COUNTY, COLORADO



Scale 1 inch = 100 feet  
Contour Interval = 2 foot  
Contour Lines are not shown North of or within Hermosa Meadows Road

Basis of Bearing and Elevations: Based on GPS Measurements using a least squares adjustment to four aerial control points set by Golf Engineering as shown on this plat whereas the 1/4 corner to Sections 10 and 11 and the C14 Section 10 as shown and monumented on this plat bears: N89°55'02" W, 1263.67'

- ### LEGEND
- Found as shown on plat
  - Found: 1 1/2" aluminum cap stamped "D.Z. Criss PLS18450"
  - Found: 1 1/2" aluminum cap stamped "Gger 154679"
  - Found: 1 1/2" aluminum cap stamped "Coki L. S. 12027"
  - ▲ Found: 1 1/2" aluminum cap stamped "McCormack L522574"
  - ◆ Found: 1 1/2" aluminum cap stamped "Clark 5816"
  - △ Found: Aerial Control Point - 1 1/2" aluminum cap stamped "Goff" with number as shown on the plat
  - Set: 1 1/2" aluminum cap stamped "Moreno PLS 31162" on 5/8" rebar
  - Property Boundary
  - Fence
  - Overhead Electric
  - Building Envelope
  - Existing structures to be relocated off project unless otherwise noted
  - Wetland protected or created - see Wetland Mitigation Plan for more information
  - Sight Prism Area - no landscaping or structures over 3 ft. high permitted



UNOFFICIAL COPY

UNOFFICIAL COPY

UNOFFICIAL COPY

### 100 YEAR FLOOD PLAN

ELEV. OF FLOOD PLAN WITHIN THIS AREA VARIES FROM 6571.4 FT. TO 6571.8 FT. AS SHOWN IN THE 1992 GOLF ENGINEERING & SURVEYING REVISED FLOODPLAIN & FLOODWAY STUDY AS ACCEPTED BY THE LETTER OF MAP REVISION (LOMR) ISSUED BY THE FEDERAL EMERGENCY MANAGEMENT AGENCY (FEMA) NOVEMBER 29, 1994

**Moreno SURVEYING & GEOGRAPHICS**  
105 1/2 MAIN AVE. DURANGO, CO 81301-8555  
DATE: 05/08 BY: JSD/DFD SCALE: 1" = 100' FT.  
DRAWN BY: RM FOR NO: 001008

COTTONWOODS AT DALTON RANCH SUBDIVISION  
OWNER: COTTONWOODS LLC, ANIMATE ESTATES  
PROJECT NO. 2001-171  
FINAL PLAT  
LOCATED IN SECTION 10, T36N, R9W, N.M.P.M., LA PLATA COUNTY, COLORADO